



Fenton Township Waste Collection Program

The Charter Township of Fenton, in conjunction with Republic Services, provides a comprehensive solid waste and recycling collection program for township residents, which includes carts for each residence for the containment of both their solid waste and recycling. **PLEASE NOTE THAT ALL OF FENTON TOWNSHIP IS COLLECTED ON FRIDAY. RECYCLING IS COLLECTED EVERY OTHER WEEK. PLEASE REFER TO THE ATTACHED RECYCLE MAP AND CALENDAR.**

How does the system work . . . ?

Republic Services has provided each household with two (2) 95-gallon curb carts. The trash carts have the capacity of (3) 32-gallon trash cans and the recycle carts have the capacity of (5) 18-gallon bins that were previously used. Every **Friday**, simply place your carts at the curb or roadside with the handle facing your house. Make sure you have a minimum distance of three feet between carts and four feet from other objects such as mailboxes, parked cars, and even your bulky items. The Republic Services automated collection truck will then pick up the cart, empty it, and return it to its original location. It's that simple!

Solid Waste Collection . . .

The trash cart should be placed at the curb/roadside NO LATER than **6:00am** on **Friday** morning. Residents are encouraged to place their carts out on Thursday evening if possible. Waste should be placed in bags and the bags placed in the cart. If you have more waste than what your cart can handle, place the extra bag(s) NEXT TO the cart, NOT ON TOP of the cart. The driver can easily empty the cart, then refill it with the other bag(s) and empty again. Regularly generate more than the contents of one cart? Need another cart? Please contact Fenton Township for details.

Recycling Collection...

Recycle carts should also be placed at the curb NO LATER than **6:00am** on **Friday** morning, (again, Thursday evening is encouraged). Recycling will be collected **every other week**, (see calendar & Recycle Map). Please refer to the **Acceptable Material Guidelines** included with this informational packet to find out what can be recycled. Consistently generate more than the contents of one cart? Need another cart? Please contact Fenton Township for details.

Yard Waste...

Yard waste is collected on a weekly basis from April 1st through the end of December. All yard waste must be placed in biodegradable Kraft paper bags or placed in 30-gallon cans clearly marked as yard waste. Plastic bags will NOT be accepted. Branches and twigs smaller than 2" in diameter must be placed in bundles no larger than 2' by 4' long or 50 pounds per bag or bundle. Positively no tree trunks, stumps, construction materials or demolition debris will be accepted.

Cart Care . . .

With the right care, your carts will last for many years without requiring maintenance. Please use trash bags to contain your waste inside the cart. This will reduce the need for periodic cleanings. Your cart has smooth surfaces that allow it to be easily cleaned with a regular garden hose and dishwashing soap. Do not place hot ashes, construction debris, and/or hazardous waste in the cart. Please do not paint or write on the cart. Each cart is labeled with a serial number. Residents should take note of the serial number of their specific Cart. If it is lost or stolen, please provide this number to the police then provide a copy of the police report to Republic and they will provide you a replacement at no cost.

Moving . . .

If you move, do not take the carts with you. The carts have been assigned to the property address along with the serial number and should be available for the next owner/occupant of the home.

Prohibited Items . . .

Items prohibited are: dirt, sod, rocks, hazardous waste of any kind, liquids of any kind including paint, flammable materials such as oil, or gas, concrete, hot ashes; yard waste of any kind, large amounts of remodeling or demolition materials, whole tires or any other material determined to be prohibited by state law.

Holidays . . .

When any of the holidays listed below falls on a weekday, your collection day will be moved to Saturday for that week.

Holidays observed:

**New Year's Day Memorial Day
Independence Day Labor Day
Thanksgiving Day Christmas Day**

Bulky Item Collection . . .

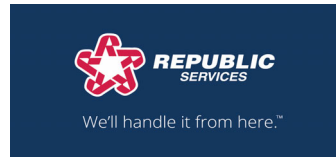
Bulky items may be placed curbside each week for collection. Bulky Items shall be bundled in parcels not to exceed two (2) foot by four (4) feet in length and/or fifty (50) pounds in weight. For larger items, call Republic at (888) 872-7455 to schedule pickup. Be sure to mention you live in Fenton Township.

Inclement Weather . . .

In the event that Republic is unable to provide service due to inclement weather, collection will take place the next day following the scheduled collection day, or as soon as weather conditions allow. The Township will immediately be notified should service be interrupted due to bad weather conditions. Please feel free to contact Republic if you have any questions regarding service during inclement weather.

Should you have any questions please call Republic at (888) 872-7455





Charter Township of Fenton

Carted Trash & Recycling Program - Frequently Asked Questions

1. Who owns the carts?

- The carts are owned by Republic Services.

2. Who maintains the carts?

- The day-to-day maintenance of the carts will be responsibility of the resident. If a cart becomes damaged, however, Republic will replace it at no charge.

3. Are there any changes to the recycling process?

- Since the implementation of the recycle carts in 2015, recycling has been, and will continue to be, picked up on an every other week basis. Please refer to calendar and map available at the Fenton Township office and on their website (www.fentontownship.org).
- There is also a renewed emphasis on proper recycling procedures. Please see the attached pages titled “All-in-One Recycling” and “Empty. Clean. Dry.”

4. Why was the change made to implement trash and recycling carts?

- With the trash in a cart, it virtually eliminates wind-blown trash and stops the scavenging of animals. With the recycle cart, history has shown that residents will recycle more with a larger container. Using the carts will also improve neighborhood aesthetics on collection day, and it is safer for Republic’s drivers.

5. What if I have more trash or recycle that will fit in the carts?

- If you have more trash, simply place bagged trash next to the cart. The Republic driver will empty your cart, reload the cart with the extra trash, and empty the cart again.
- If you have extra recyclable materials, simply place next to the cart in a clear plastic bag, or in a bin or tote labeled for recycling. Recycle stickers are available at the Fenton Township office.

6. What time should I have the carts to the curb?

- Your carts should be to the curb by 6:00am on your service day. You may choose to set the carts to the curb the night before, if you prefer.

7. Can I put yard waste in my cart?

- No, yard waste cannot be mixed with trash or recycling.

8. What do I do with large/bulky items?

- Bulky items, (furniture, appliances, etc.), can still be placed to the curb on a weekly basis. Please call to schedule those items at least 24 hours in advance of your pick-up day so the proper equipment can be scheduled to pick it up.

All-in-One Recycling.™

Please Recycle

PAPER



paper (staples okay) , newspaper,
envelopes, junk mail, phone books,
brochures, magazines

PLASTIC



#1, #2, #4, #5 & #7 water bottles,
take-out containers, soda bottles

CARDBOARD



ream wrappers, file folders, poster
board, frozen food boxes, cereal
boxes, cardboard boxes

METAL



aluminum beverage cans, food cans,
scrap metal, some small appliances,
pots and pans

GLASS



Bottles (clear, green & brown), jars

Do Not Recycle

- aerosol cans
- plastic bags
- CD cases
- aluminum foil
- batteries
- mirrors or ceramics
- food waste
- stickers & address labels
- polystyrene foam
- tissue, paper towels or napkins

non-recyclable items that require
special handling:

- incandescent light bulbs
- fluorescent tubes
- computers & electronics
- needles or syringes
- hazardous waste
- paint
- toxic material containers
- propane tanks



Get started at
RepublicServices.com

We'll handle it from here.™

Empty. Clean. Dry.

The new way to recycle.



Reduce. Reuse. Recycle. Anyone growing up in the 1970s, '80s or '90s learned the three Rs of recycling in school. We were taught to recycle everything we could. We added recycling containers to our homes, our offices and classrooms and recycling became a part of our culture.

In the 40 years since recycling was introduced, Americans recycle nearly 87 million tons per year. That means that each of us recycles approximately 1.5 pounds per day! However, the recycling model we all grew up with is changing, and we have to change with it.

Trying to recycle unclean or unrecyclable material increases sorting time and slows down the recycling process, damages the facility's equipment and causes contaminants in the bales of clean recyclables that decreases the value of the items. When this occurs, we have to put the ENTIRE load of recyclables into our landfills due to the contamination.



Empty.



Clean.



Dry.

EMPTY means making sure there is no food or product residue. Make sure all of that goes into the trash or down the drain as part of the EMPTY process.

CLEAN means that empty recyclable containers should be rinsed. So, no mustard in the mustard containers or left over ketchup in the ketchup bottles. If you cannot get a container completely clean, it is best to put it into the trash so as not to contaminate the rest of your recycling material and the overall process.

DRY means letting containers dry before placing in your **All-in-One Recycling™** blue container so that the paper and cardboard does not get wet. Wet or soiled paper and cardboard cannot be recycled.

By practicing Empty. Clean. Dry. with our families, we can ensure the recycling materials leaving our homes are in fact recyclable. Together, we are caretakers of this blue planet. It is worthy of every effort we can make to protect it for our children's children.

Be sure your recyclables are empty, clean and dry before you toss them in the recycling container.

Recyclable Items



Paper

Office paper
Newspaper
Envelopes
Junk mail
Phone books
Brochures
Magazines
Catalogs



Cardboard

File folders
Poster board
Shipping boxes
(folded flat)
Frozen food boxes
Cardboard boxes
Milk cartons



Plastic

Water bottles
Take-out containers
Soda bottles
Detergent/containers



Metal

Aluminum beverage cans
Food cans
Steel food containers



Glass

Bottles (clear, green and brown)
Jars

Non-Recyclable Items

Plastic bags or plastic wrap
Aerosol cans
Aluminum foil
Batteries
Food waste

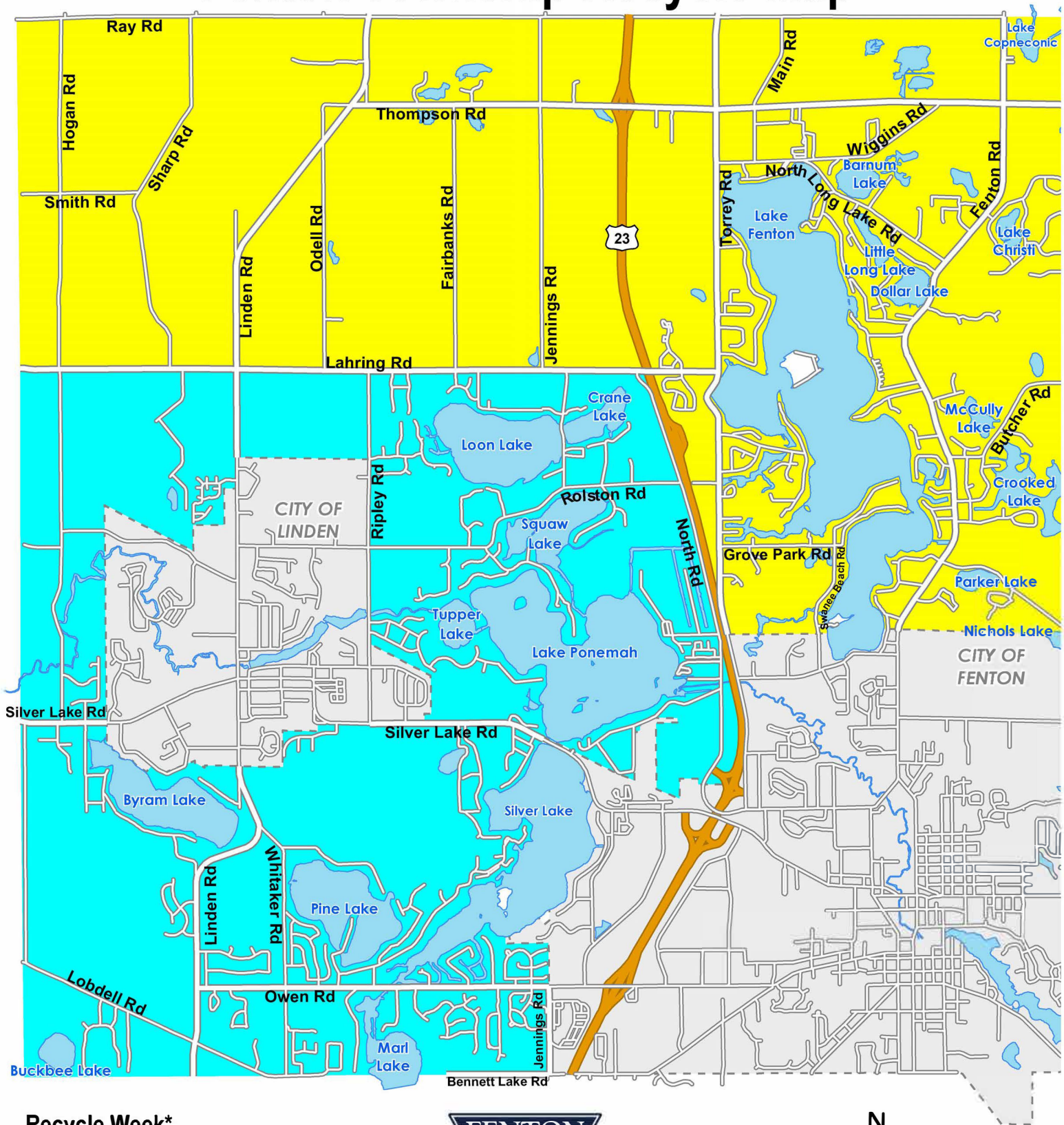
Pizza boxes
Electronic waste
Mirrors or ceramics
Paint
Pesticides

Medication
Styrofoam
Tissue, paper towels and napkins
Syringes and needles



We'll handle it from here.®

Fenton Township Recycle Map

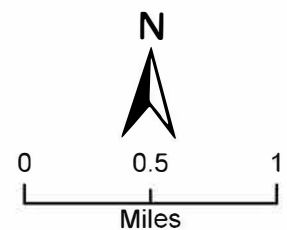


Recycle Week*

RN - Recycle North

RS - Recycle South

**Please see the recycle calendar for the RN and RS weeks highlighted by month.*



Map Date: 01/01/2024

Disclaimer: This map is for visual purposes only. Fenton Township, its administrators, employees, or contractors are not responsible for any decisions made based upon the information in the map.

2024

Fenton Township Trash, Recycle and Yard Waste Calendar

 Holiday RS=Recycle South RN=Recycle North Refer to recycle map

T=Trash Y=Yard Waste

January						
S	M	T	W	T	F	S
	1	2	3	4	5	T/RS
7	8	9	10	11	T/RN	13
14	15	16	17	18	T/RS	20
21	22	23	24	25	T/RN	27
28	29	30	31			

February						
S	M	T	W	T	F	S
				1	T/RS	3
4	5	6	7	8	T/RN	10
11	12	13	14	15	T/RS	17
18	19	20	21	22	T/RN	24
25	26	27	28	29		

March						
S	M	T	W	T	F	S
					T/RS	2
3	4	5	6	7	T/RN	9
10	11	12	13	14	T/RS	16
17	18	19	20	21	T/RN	23
24	25	26	27	28	T/RS	30
31						

April						
S	M	T	W	T	F	S
	1	2	3	4	T/RN/Y	6
7	8	9	10	11	T/RS/Y	13
14	15	16	17	18	T/RN/Y	20
21	22	23	24	25	T/RS/Y	27
28	29	30				

May						
S	M	T	W	T	F	S
			1	2	T/RN/Y	4
5	6	7	8	9	T/RS/Y	11
12	13	14	15	16	T/RN/Y	18
19	20	21	22	23	T/RS/Y	25
26	27	28	29	30	31	

June						
S	M	T	W	T	F	S
						T/RN/Y
2	3	4	5	6	T/RS/Y	8
9	10	11	12	13	T/RN/Y	15
16	17	18	19	20	T/RS/Y	22
23	24	25	26	27	T/RN/Y	29
30						

July						
S	M	T	W	T	F	S
	1	2	3	4	5	T/RS/Y
7	8	9	10	11	T/RN/Y	13
14	15	16	17	18	T/RS/Y	20
21	22	23	24	25	T/RN/Y	27
28	29	30	31			

August						
S	M	T	W	T	F	S
				1	T/RS/Y	3
4	5	6	7	8	T/RN/Y	10
11	12	13	14	15	T/RS/Y	17
18	19	20	21	22	T/RN/Y	24
25	26	27	28	29	T/RS/Y	31

September						
S	M	T	W	T	F	S
1	2	3	4	5	6	T/RN/Y
8	9	10	11	12	T/RS/Y	14
15	16	17	18	19	T/RN/Y	21
22	23	24	25	26	T/RS/Y	28
29	30					

October						
S	M	T	W	T	F	S
		1	2	3	T/RN/Y	5
6	7	8	9	10	T/RS/Y	12
13	14	15	16	17	T/RN/Y	19
20	21	22	23	24	T/RS/Y	26
27	28	29	30	31		

November						
S	M	T	W	T	F	S
					T/RN/Y	2
3	4	5	6	7	T/RS/Y	9
10	11	12	13	14	T/RN/Y	16
17	18	19	20	21	T/RS/Y	23
24	25	26	27	28	T/RN/Y	

December						
S	M	T	W	T	F	S
1	2	3	4	5	T/RS/Y	7
8	9	10	11	12	T/RN/Y	14
15	16	17	18	19	T/RS/Y	21
22	23	24	25	26	27	T/RN/Y
29	30	31				