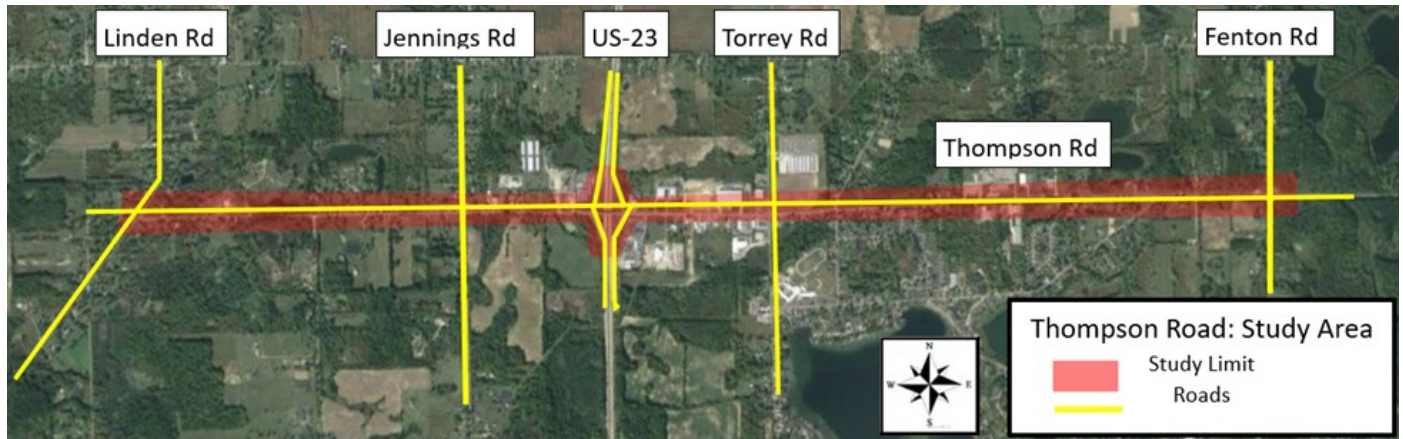


# Thompson Road Corridor Study

## Fenton Township



### Project Details:

This Corridor Study on Thompson Road extends 3.8 miles from Linden Road to Fenton Road. This study explores potential design alternatives and improvements that will help alleviate current and anticipated future congestion along the corridor. Currently, the interchange of US-23 and Thompson Rd. experiences rush hour traffic delays for the northbound and southbound US-23 exit ramps that can back up to US-23. A main cause of this is the lack of roadway capacity between the two Thompson Road traffic signals, often leading to backups from one signal through the other. Addressing the traffic congestion and safety issues at the US-23 Interchange is an urgent priority.

### Project Traffic and Safety Improvement Goals:

The traffic operations and safety improvement goals include—

- Reduce traffic delays at the US-23 Interchange, including the northbound and southbound exit ramp backups along with the Thompson Road backups between and approaching the two US-23 ramp intersections.
- Improve safety at the Thompson Road intersections with high-crash rates. These three intersections are at southbound US-23 ramps, northbound US-23 ramps, and Torrey Road.
- Improve Thompson Road outside of the US-23 Interchange to encourage development. These options include widening, for a center left turn lane, upgrading traffic signals, and roundabouts.



#### FOR MORE INFORMATION:

Mike Deem, Zoning Administrator  
810-629-1537  
Fentontownship.org

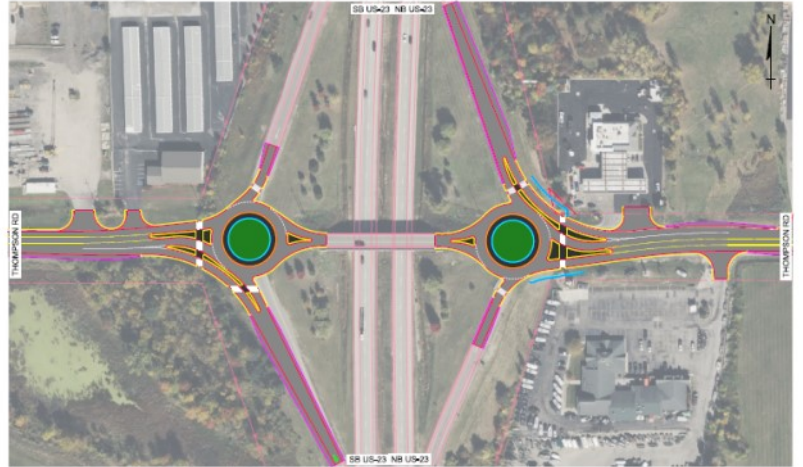


Scan for Project  
Website

# Safety Improvements

## Roundabouts at US-23

- Operates efficiently with reduced delay and increased capacity over a traditional four-way stop or signalized intersection.
- Roundabouts reduce all crashes by 55% with fatal and injury-related crashes reduced by 78%
- Number and severity of crashes are reduced due to lowering speeds and angle of impact.



## Center Left-Turn Lane (Jennings to US-23)

- Reduced rear-end crashes
- Simplified left-turns
- Smoother flow of traffic and increased capacity
- Important for future development
- Smooth transition into roundabout



## Preliminary Schedule

